

# CHAPTER 14 : OXFORD MIDI 150A

---



Sunrise Medical is ISO 9001 certified, which ensures quality at all stages of the development and production of this hoist.

## Contents

MODEL	SERIAL NO. RANGE	PAGE
OXFORD MIDI 150A		14.3
OXFORD MIDI 150A		14.5

## IMPORTANT

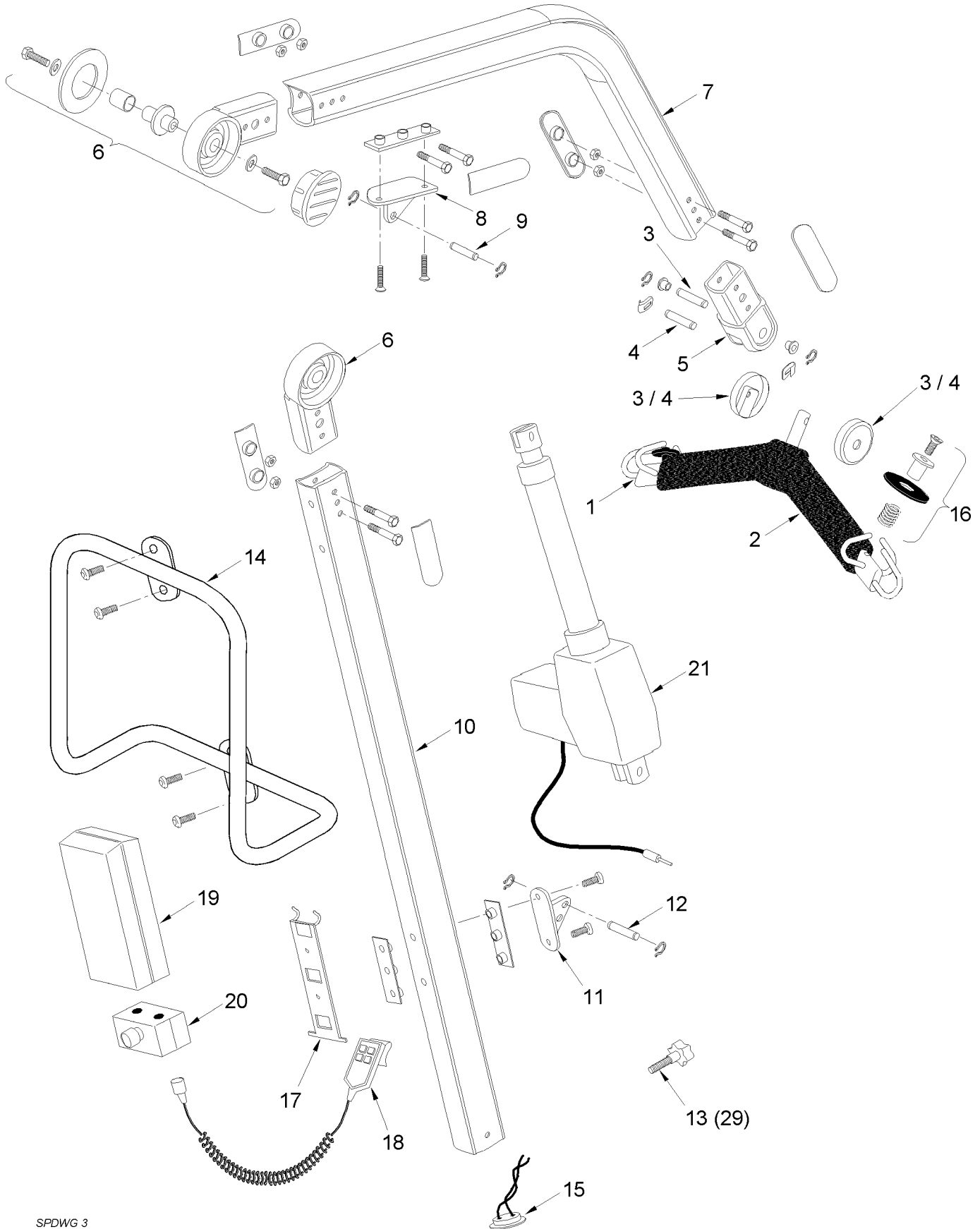
IT IS POTENTIALLY HAZARDOUS TO FIT OR USE ANY PARTS OTHER THAN GENUINE **SUNRISE MEDICAL PARTS**. THE COMPANY DISCLAIMS ALL LIABILITY FOR THE CONSEQUENCES OF SUCH USE, WHICH IN ADDITION VOIDS THE MACHINE WARRANTY.

THIS HOIST IS FOR THE CARRIAGE OF ONE PERSON AND **MUST NOT BE USED FOR ANY OTHER PURPOSE.**

# OXFORD MIDI 150A



This illustration and accompanying text set out in this Document is the Property of SUNRISE MEDICAL LTD. and must not be copied or used for manufacturing, tendering or any other purpose without their permission.



SPDWG 3

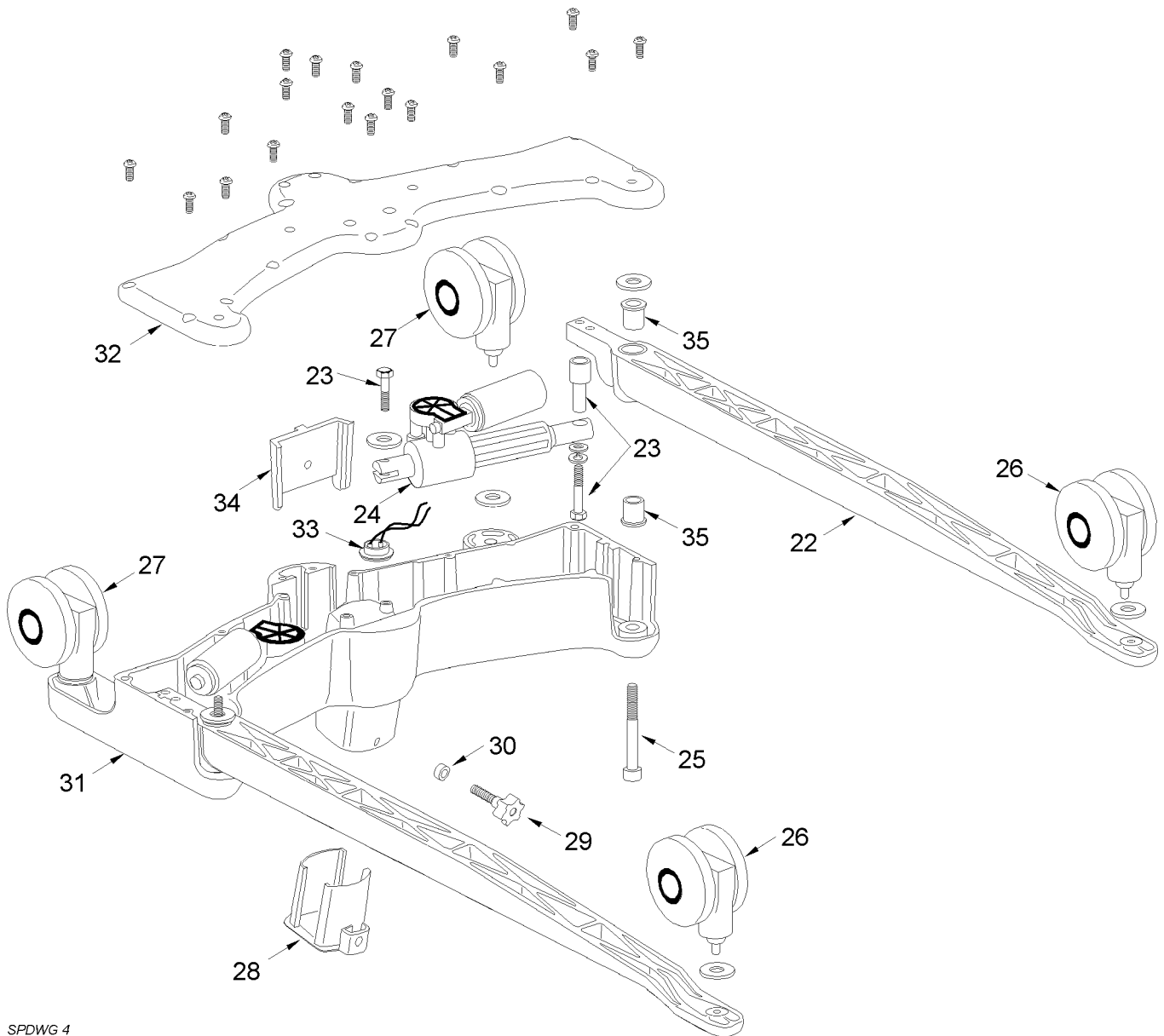
# OXFORD MIDI 150A

ITEM NO.	PART NO.	DESCRIPTION	QTY	SERIAL NO.
1	808003.10130	SPREADER BAR (GREEN) COMPLETE	Kit	
2	EM-2992	SPREADER BAR COVER (GREY)	1	
3	808003.10131	SPREADER BAR FULCRUM PIN (CIRCLIP FIXING) COMPLETE	Kit	
4	808003.10132	SPREADER BAR FULCRUM PIN (SPRING CLIP FIXING) COMPLETE	Kit	
5	808003.10133	SPREADER BAR END CASTING COMPLETE	Kit	
6	808003.10134	MAST/BOOM PIVOT ASSEMBLY COMPLETE	Kit	
7	NM-3714	BOOM ONLY	1	
8	808003.10135	ACTUATOR TOP MOUNTING BRKT. COMPLETE	Kit	
9	808003.10040	RAM/BOOM FULCRUM PIN COMPLETE	Kit	
10	NM-3715	MAST ONLY	1	
11	808003.10136	ACTUATOR BOTTOM MOUNTING BRKT. COMPLETE	Kit	
12	808003.10041	RAM/MAST FULCRUM PIN COMPLETE	Kit	
13	NM-3691	MAST LOCKING KNOB	1	
-	808003.10137	MAST AND BOOM PLASTIC TRIMS	Kit	
14	808003.10138	PUSH HANDLE COMPLETE	Kit	
15	NM-3634	MAST WIRING LOOM	1	
-	808003.10139	BOOM & MAST FIXINGS	Kit	
16	808003.10013	SLING RETAINER ASSEMBLY	Kit	
17	NM-3636	POWER PACK MOUNTING BRACKET	1	
18	NM-3637	HANDSET - LINAK HB50	1	
19	NM-3639	BATTERY PACK - LINAK BAJ1	1	
20	NM-3640	CONTROL BOX - LINAK CBJ1	1	
21	NM-3837	LINAK ACTUATOR + 500mm CABLE	1	

# OXFORD MIDI 150A



This illustration and accompanying text set out in this Document is the Property of SUNRISE MEDICAL LTD. and must not be copied or used for manufacturing, tendering or any other purpose without their permission.



SPDWG 4

# OXFORD MIDI 150A

ITEM NO.	PART NO.	DESCRIPTION	QTY	SERIAL NO.
22	808003.10140	LEG ONLY	Kit	
23	808003.10141	LEG ACTUATOR MOUNTING	Kit	
24	NM-3698	ACTUATOR - SKF 36A X 21mm STROKE	1	
25	808003.10142	LEG PIVOT BOLT	Kit	
26	808003.10143	FRONT CASTOR	Kit	
27	808003.10144	REAR CASTOR	Kit	
28	NM-3710	BASE INSERT SLEEVE	1	
29	NM-3691	MAST LOCKING KNOB	1	
30	NM-3609	LOCKING KNOB BUSH	1	
31	NM-3619	BASE CASTING ONLY	1	
32	NM-3620	BASE CASTING LID	1	
33	NM-3633	BASE WIRING LOOM	1	
-	808003.10145	BASE FIXINGS & TRIM	Kit	
34	NM-3732	BASE INSERT PLATE	1	
35	NM-3711	LEG PIVOT BUSH	2	

This page is intentionally blank